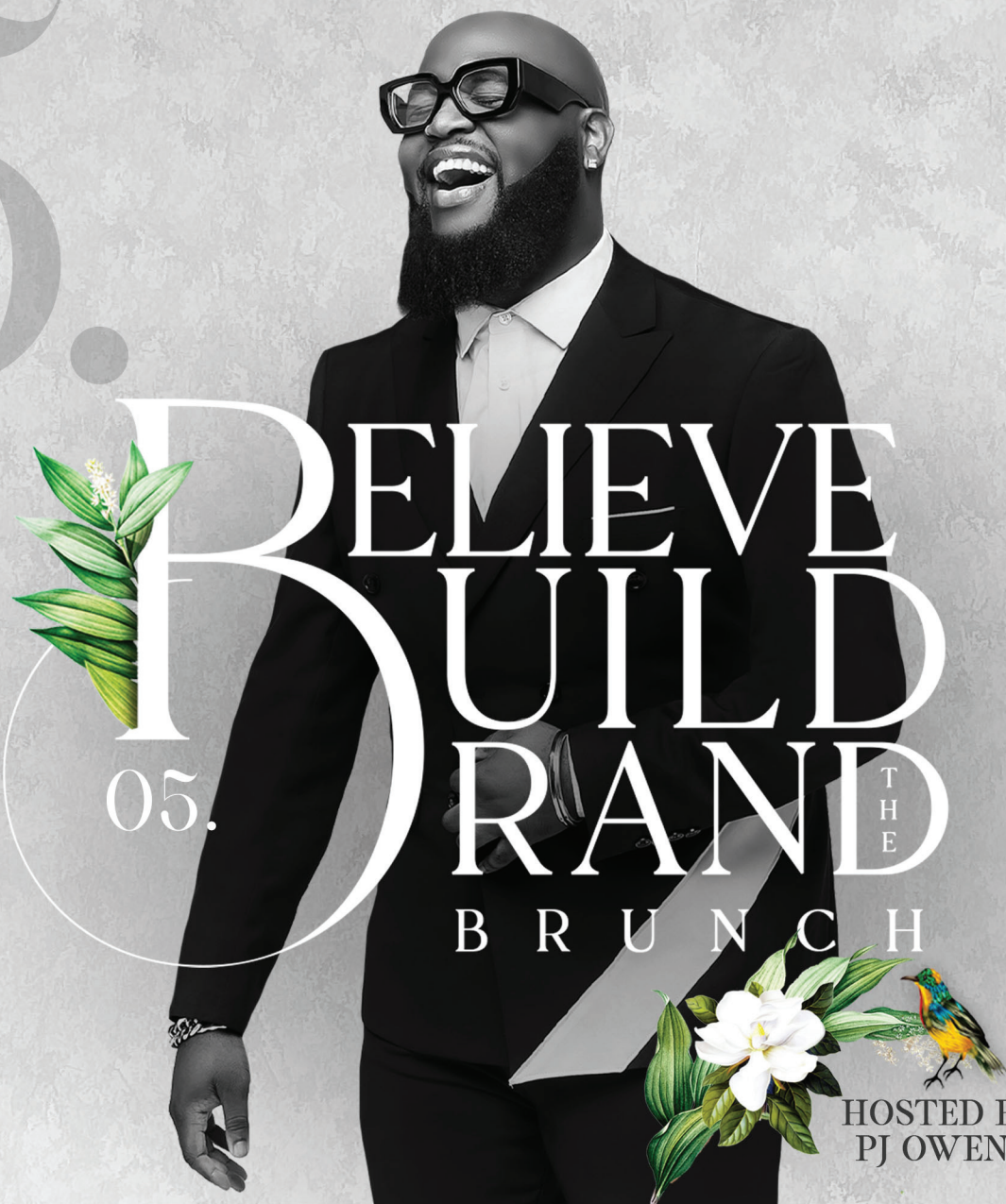


FIFTH  
ANNUAL  
BRUNCH

== SATURDAY  
DECEMBER 7, 2024



HOSTED BY  
PJ OWENS

— SPONSORSHIP DECK 2024 —

WWW.BELIEVEBUILDBRAND.COM



---

# ABOUT THE BRAND

---

***BELIEVE BUILD BRAND - THE BRUNCH, WHERE YOUR VISION BOARD MEETS THE PEOPLE WHO CAN MAKE IT HAPPEN .  
POWERED BY MUSE BRANDING & DEVELOPMENT AGENCY!***

THIS SOIRÉE HAS EASILY BECOME ONE OF THE GO TO EVENTS FOR BUSINESS OWNERS, INFLUENCERS, GAME CHANGERS AND DREAMERS, HOSTED BY PHILADELPHIA BRED CREATIVE DIRECTOR, TRUSTED BRAND ARCHITECT AND MEDIA PERSONALITY, PJ OWENS. WHAT MAKES THIS AFFAIR SO HIGHLY ANTICIPATED IS THE SYNERGY BETWEEN GUESTS AND THE LIFELONG CONNECTIONS THAT ARE CULTIVATED. THIS GATHERING BRINGS TOGETHER INFLUENTIAL THOUGHT LEADERS, INDUSTRY PIONEERS, AND AMBITIOUS ENTREPRENEURS. EACH YEAR THIS EVENT LEAVES ATTENDEES EMPOWERED AND INVIGORATED TO MOVE FROM MUNDANE THINKING TO MEANINGFUL LIVING.

## ***OUR FORMULA IS SIMPLE:***

(RESTORING IN-PERSON CONNECTIONS + MEANINGFUL COLLABORATIONS) X ADDED VALUE = THE EVOLUTION OF PERSONAL AND PROFESSIONAL BRANDS ALL OVER THE WORLD.

WE LIKE TO THINK OF THIS EVENT AS A BRIDGE BETWEEN YOUR CURRENT LIFE AND COLLECTIVELY ACHIEVING THE LIFE YOU DAYDREAM ABOUT. WE ARE NOT JUST BUILDING AN EVENT. WE ARE BUILDING A CULTURE OF NEXT LEVEL THOUGHT LEADERS WHOSE GIFTS AND TALENTS WILL CHANGE THE TRAJECTORY OF HOW WE DO LIFE!



[WWW.BELIEVEBUILDBRAND.COM](http://WWW.BELIEVEBUILDBRAND.COM)





## AUDIENCE

BELIEVE BUILD BRAND, THE BRUNCH, PRIDES ITSELF ON PROVIDING A GROWING PLATFORM FOR THE ESTABLISHED POWER PLAYER AND A SAFE SPACE FOR THE EVOLVING DREAMER.

- ✓ FORWARD-THINKING MEN & WOMEN BETWEEN THE AGES OF 25-55
- ✓ STARTUP BRANDS
- ✓ PEOPLE WHO ARE EVOLVING IN EVERY AREA OF THEIR LIFE
- ✓ INDIVIDUALS WHO NEED TO ESTABLISH NEXT LEVEL SUPPORT & CONSULTING
- ✓ LUXURY BRANDS

## REPRESENTED INDUSTRIES



SMALL  
BUSINESSES



LARGE  
CORPORATIONS



PERSONAL  
BRANDS



FAITH  
BASED



PERFORMING  
ARTISTS



NON PROFIT  
ORGANIZATIONS



FASHION &  
ENTERTAINMENT



PUBLIC  
FIGURES

GROWING EVENT  
WITH OVER

2K

ATTENDEES WORLDWIDE  
OVER THE LAST  
3 EVENTS - BOTH  
VIRTUAL AND IN-PERSON

INCREASED BRAND  
EXPOSURE & AWARENESS

ACCESS TO  
ATTENDEE DATA

POTENTIAL  
REACH OF OVER

50K

UNIQUE  
TARGETED  
SOCIAL MEDIA  
PROFILES

CLIENTELE'S WORK HAS BEEN SEEN ON







# BELIEVE BUILD RAND

THE  
BRUNCH

**BELIEVE BUILD BRAND 2024** – THE 5TH INSTALLMENT OF OUR SIGNATURE EVENT. CELEBRATING 5 YEARS OF INNOVATION, ENTREPRENEURSHIP, AND BRAND EXCELLENCE. OUR GOAL IS TO ELEVATE THIS BRUNCH TO A FULL PRODUCTION ALL WHILE KEEPING THE ESSENCE AND CORE VALUES OF THE BRAND. A MOMENT TO EXHALE, PUT ON YOUR BEST ATTIRE, APPRECIATE WHAT WAS, AND CELEBRATE WHAT IS TO COME. A FULL BRANDED EXPERIENCE – AND WITH YOUR HELP AND SUPPORT THIS WILL BE AN UNFORGETTABLE MOMENT FOR ALL PARTIES INVOLVED.



# SPONSORSHIP OPPORTUNITIES

## MUSE 1- \$500

### PRE EVENT ENGAGEMENT (ONLY)

- 1 Social Media Graphic Advertisement w/ Logo
- 1 Believe Build Brand Website Promo w/ Logo
- Official Placement in THE MUSE LISTING Digital Business Directory 2024

(Please note: The MUSE 1 sponsorship package does not include event tickets or seating.)

## MUSE 2 - \$750

### PRE EVENT ENGAGEMENT

- 2 Social Media Graphic Advertisements w/ Logo
- 2 Believe Build Brand Website Promos w/ Logo
- Official Page in THE MUSE LISTING Digital Business Directory 2024

### EVENT DAY ENGAGEMENT

- Product Placement
- Main Stage Logo Placement
- Live Drops @ Event
- Logo on Intro Screen of Welcome Room

(Please note: The MUSE 2 sponsorship package does not include event tickets or seating.)

## MUSE 3- \$1000

### PRE EVENT ENGAGEMENT

- 4 Social Media Graphic Advertisements w/ Logo
- 4 Believe Build Brand Website Promos w/ Logo
- 1 Full-Page Ad in THE MUSE LISTING Digital Business Directory 2024

### EVENT DAY ENGAGEMENT

- Product Placement
- Brand Recognition
- Main Stage Logo Placement
- Live Drops @ Event
- Logo on Intro Screen of Welcome Room

(Please Note: MUSE 3 does include 2 tickets with preferred seating at event.)

### POST EVENT ENGAGEMENT

- 1 Custom BBB Acknowledgement Graphic

\*\*\*8 SLOTS AVAILABLE\*\*\*

\*\*\*5 SLOTS AVAILABLE\*\*\*

\*\*\*5 SLOTS AVAILABLE\*\*\*

## MUSE PHOTO ACTIVATION 1 SPONSOR - \$1500

- Includes MUSE 3 sponsorship level
- Brand likeness included on all photos, videos & photo gifts at the MUSE Photo Booth
- MUSE SPOTLIGHT during brunch where business will be highlighted by PJ Owens
- Product placement in 200+ gift bags

\*\*\* 1 SLOT AVAILABLE\*\*\*

## MUSE PHOTO ACTIVATION 2 SPONSOR - \$1800

- Includes MUSE 3 sponsorship level
- Brand Identity on Photo Backdrop in partnership with MUSE
- MUSE SPOTLIGHT during brunch where business will be highlighted by PJ Owens
- Product placement in 200+ gift bags

\*\*\* 1 SLOT AVAILABLE\*\*\*

*Please Note: MUSE Photo Activation Sponsorship levels do include 2 tickets with preferred seating at event.*



# BELIEVE BUILD RAND THE BRUNCH

## MUSE TITLE SPONSOR STAGE-\$5,000

- Everything Included in MUSE 3 sponsorship level
- Branded Stage with your brand identity along with MUSE
- Brand Identity on Signature Stage screen
- Rotating Brand Identity on Happy Hour lounge screen
- Product placement on gift bags
- Commercial Spot During Believe Build Brand Brunch
- Table of 10 Guests

\*\*\*2 SLOTS AVAILABLE\*\*\*

## MUSE PARTNERSHIP SPONSOR -\$10,000

- Includes the entirety of the TITLE SPONSOR sponsorship level
- 2 Tables for Guests (20 seats)
- Official Presentation of Check to Small Business Pitch Winner
- Full-Spread in THE MUSE LISTING Digital Business Directory 2024
- Onsite Media Interview w/ PJ Owens

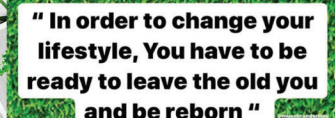
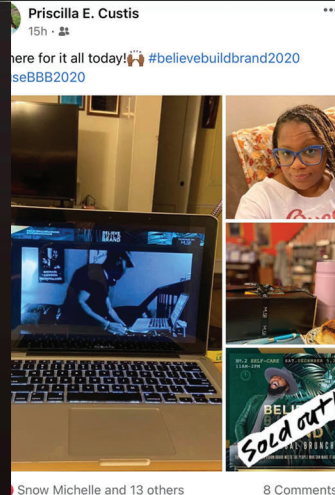
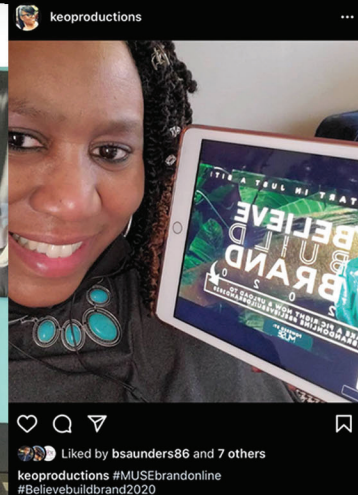
\*\*\*1 SLOT AVAILABLE\*\*\*







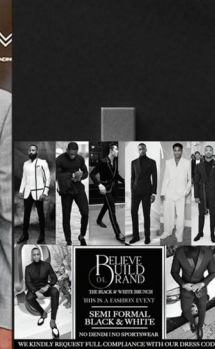
# BELIEVE BUILD BRAND ARCHIVE 2019-2020







# BELIEVE BUILD BRAND ARCHIVE 2022-2023







# BELIEVE BUILD RAND

05.

THE  
BRUNCH



HOSTED BY  
PJ OWENS

✉ [MUSEBRANDING@GMAIL.COM](mailto:MUSEBRANDING@GMAIL.COM)  
📱 (267) 205-3451  
📷 @BELIEVEBUILDBRAND

PAYMENTS CAN BE MADE VIA ACH, PAYPAL, AND CHECK.

CHECKS CAN BE MADE PAYABLE TO:  
MUSE BRANDING & DEVELOPMENT

FOR MORE INFORMATION ON HOW TO PARTNER WITH US, OR TO  
COMMUNICATE YOUR PREFERRED PAYMENT METHOD, PLEASE USE  
THE CONTACT INFORMATION ABOVE.

[WWW.BELIEVEBUILDBRAND.COM](http://WWW.BELIEVEBUILDBRAND.COM)